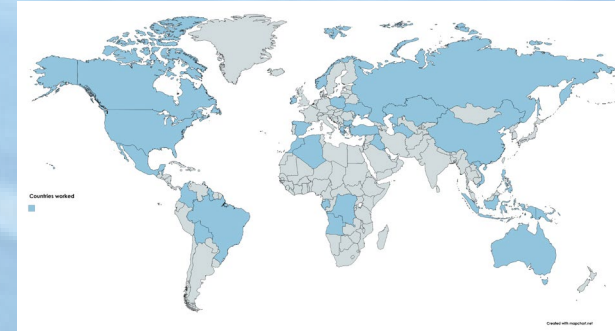


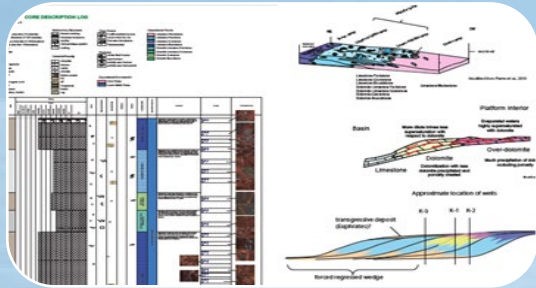
Sedimentary Geology Consultants

<https://www.sedimentarygeology.com/>

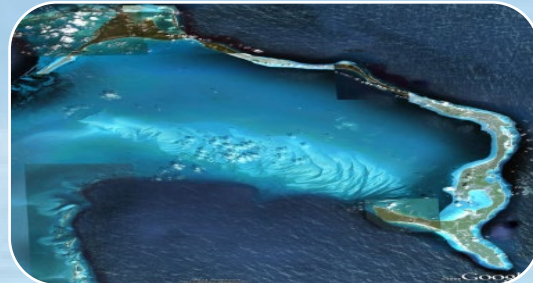
Providing sedimentary geology technical analyses from small, specific tasks to entire reservoir characterization projects using my network of independent consultants in geophysics, petrophysics, structural geology, reservoir modeling and engineering.



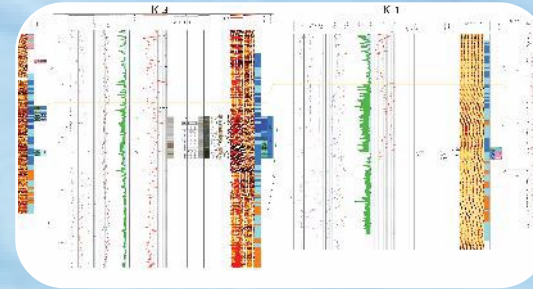
Countries where I've worked



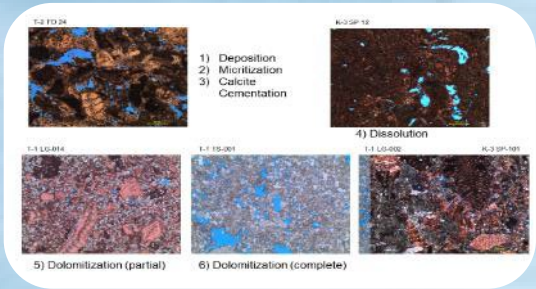
Core Description
 Depositional models
 Facies-based geomodeling inputs
 (training images for MPS, maps, trends, geobody dimensions)



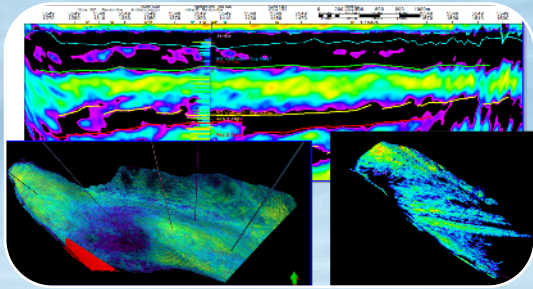
Analogs: modern and ancient, field trips
 Modern equivalents to your system, ancient outcrop examples.
 2D and 3D understanding of distribution of facies and geobodies



Sequence stratigraphic correlations
 Image log interpretation & integration to fill gaps in core data
 Extending 1D core descriptions into the 2D and 3D world.



Thin Section Petrography, Image Analysis for Reservoir Quality
 Diagenetic studies incl. isotopic tools
 Image Log interpretation, integration with petrophysics



Seismic Stratigraphy interpretation
 Reservoir Architecture delineation
 Mapping of geobodies for volumetrics
 Assisting in facies interpretation using various seismic attributes



Training: classroom and field seminars
 Proprietary tools like the Carbonate Scorecard
 Management of core analyses including procurement of vendors



Jean C. C. Hsieh
 PhD, P. Geo

Professional geologist with 20+ years' experience in exploration and development, research and technology deployment, as well as direct management of geoscience specialists. She has worked for Chevron, Talisman, & Repsol supporting upstream projects around the world. Experience includes carbonates, clastics and unconventional reservoirs.