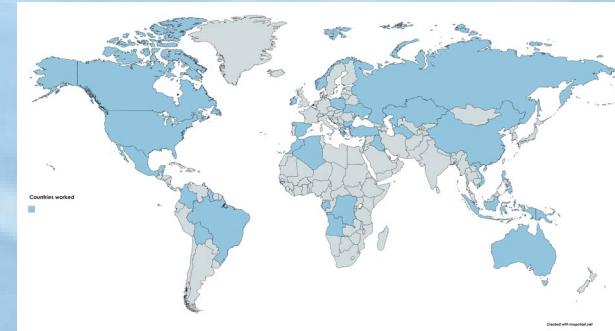


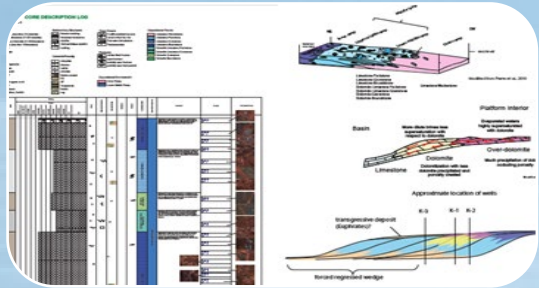
# Sedimentary Geology Consultants

<https://www.sedimentarygeology.com/>

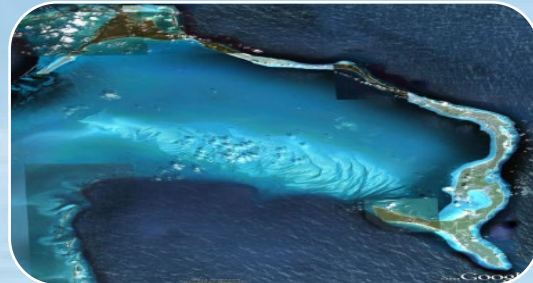
Providing sedimentary geology technical analyses from small, specific tasks to entire reservoir characterization projects using my network of independent consultants in geophysics, petrophysics, structural geology, reservoir modeling and engineering.



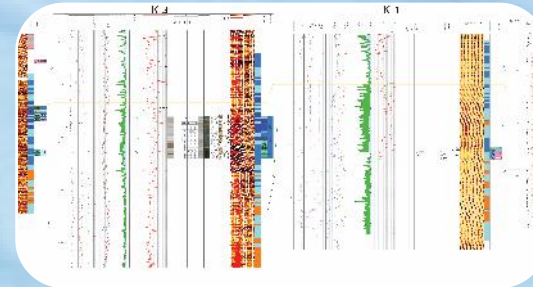
Countries where I've worked



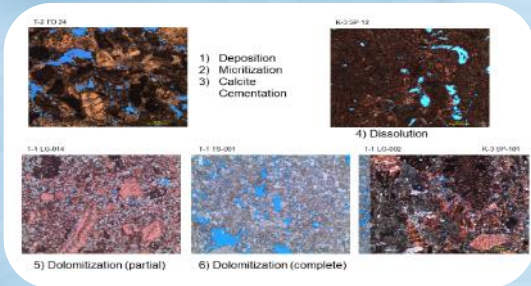
Core Description  
Depositional models  
Facies-based geomodeling inputs  
(training images for MPS, maps, trends, geobody dimensions)



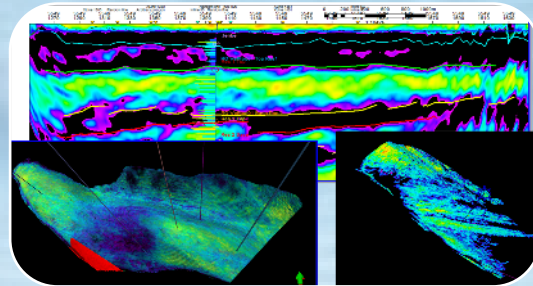
Analogs: modern and ancient, field trips  
Modern equivalents to your system, ancient outcrop examples.  
2D and 3D understanding of distribution of facies and geobodies



Sequence stratigraphic correlations  
Extending 1D core descriptions into the 2D and 3D world.  
Integration with other data such as biostratigraphy & production data



Thin Section Petrography, Image Analysis for Reservoir Quality  
Diagenetic studies incl. isotopic tools  
Image Log interpretation, integration with petrophysics



Seismic Stratigraphy interpretation  
Reservoir Architecture delineation  
Mapping of geobodies for volumetrics  
Assisting in facies interpretation using various seismic attributes



Training: classroom and field seminars  
Proprietary tools like the Carbonate Scorecard  
Management of core analyses including procurement of vendors



Jean C. C. Hsieh  
PhD, P. Geo

Professional geologist with 20+ years' experience in exploration and development, research and technology deployment, as well as direct management of geoscience specialists. She has worked for Chevron, Talisman, & Repsol supporting upstream projects around the world. Experience includes carbonates, clastics and unconventional reservoirs.